

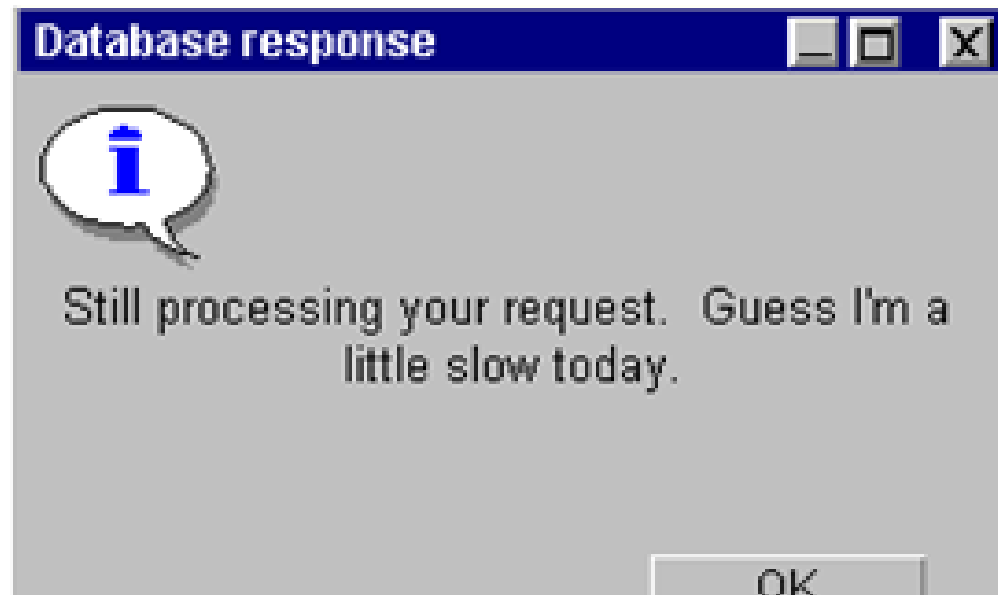
CS3724 Human-computer Interaction

User Interaction
Design Guidelines
Exercises

Copyright © 2004 H. Rex Hartson and Deborah Hix.

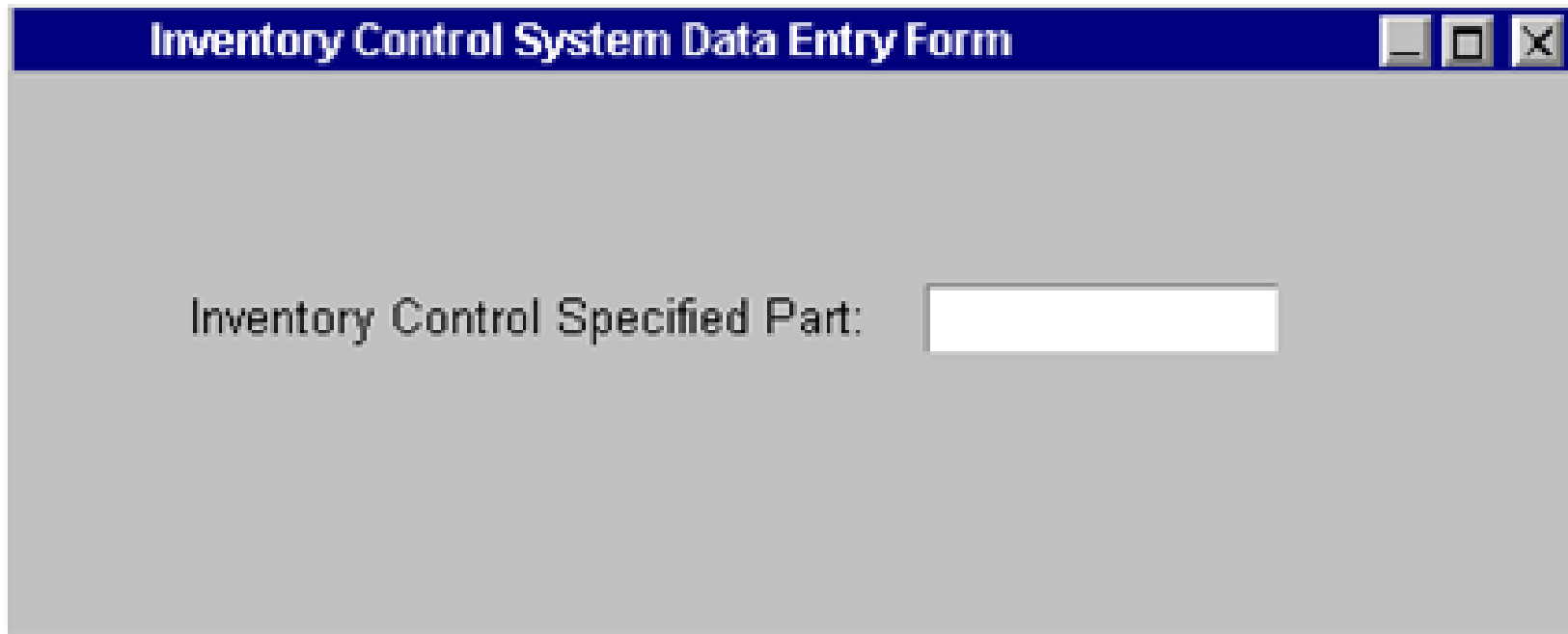
What's Wrong With This Picture?

- What interaction design guideline(s) does each of these situations violate?
 - This message appears 5 seconds after the user issues a web search command (assume quick communications performance)



What's Wrong With This Picture?

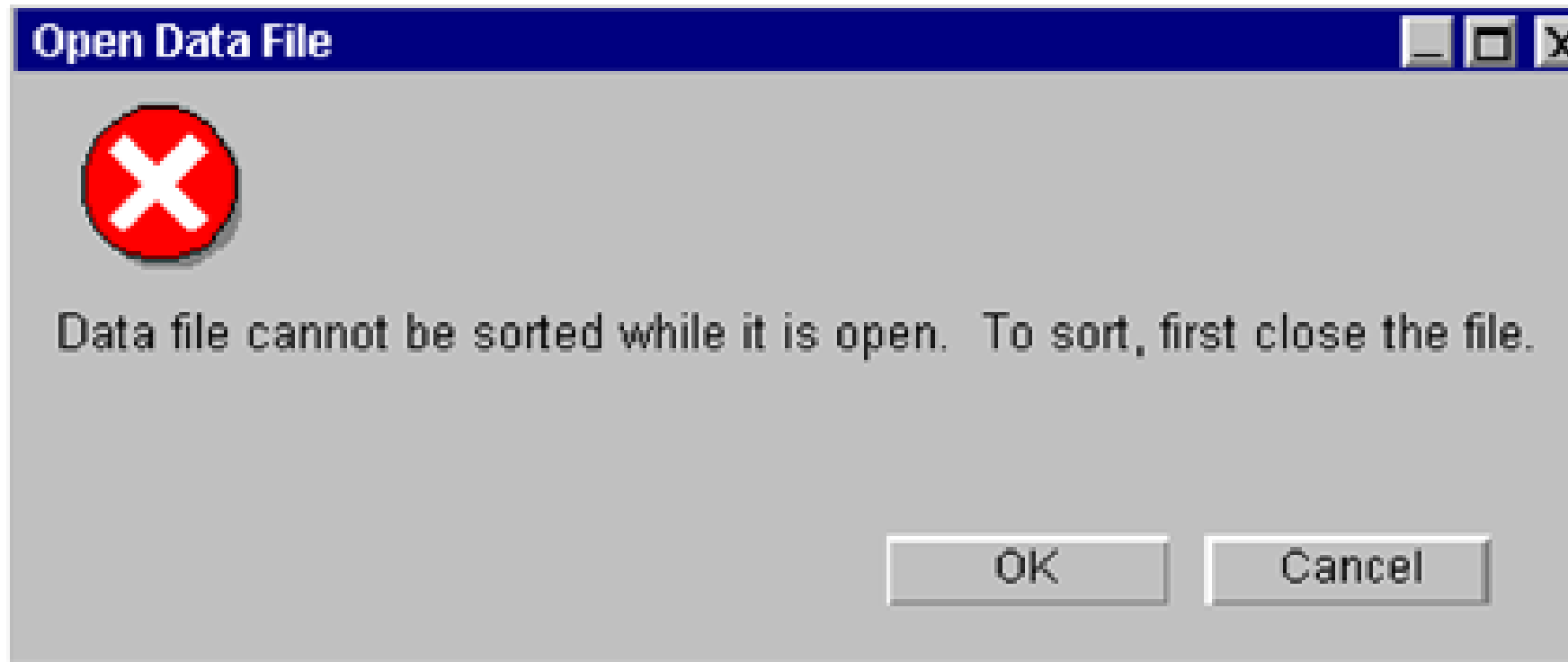
- A field in a form for a web-based inventory control system has label:



The image shows a screenshot of a web browser window displaying a form titled "Inventory Control System Data Entry Form". The form has a light gray background and a dark blue title bar. The main content area contains the text "Inventory Control Specified Part:" followed by a white rectangular input field. The input field is empty and has a thin gray border. The window's title bar includes standard minimize, maximize, and close buttons.

What's Wrong With This Picture?

- The user clicks on the sort button and gets this message:



What's Wrong With This Picture?

- This layout is used on a web order form:

	(1)	(2)	(3)	(4)
PART NO	__ - ____	__ - ____	__ - ____	__ - ____
QTY	_____	_____	_____	_____
PRICE	_____.__	_____.__	_____.__	_____.__

What's Wrong With This Picture?

- This is an exchange between an email user and the email system:

Date: 17 March 2001 23:25 edt

From: HixD, CSDMS

Subject: errors

To: HartsonHR, CSDMS

Rex, I seem to be having some difficulty getting out of the mail system -- can you help me?

--- (2) ---

read_mail: e

Error: out_of_bounds at abbrev\$abbrev_1366

(>system_library_standard bound_full_cp_)

referencing !BBBJLQBMfJWFb, temp.j03471777777

(in process dir)

Attempt to access beyond end of segment.

ok

What's Wrong With This Picture?

- A "help" screen contains this information on the system's "help" facility:

The comma key on the minikeypad is the HELP key for forms. While in the ABC-Style Editor and Calendar, use PF2 for HELP; use "H" for HELP while in the Desk Calculator; use the "gold" key plus and "H" key while using the XYZ-Style Editor. ...By the way, if you need help creating a document, it is better to be in the Word Processing Menu when you press HELP rather than in the main menu.... It is a good idea to remember the location and purpose of each key mentioned above.

What's Wrong With This Picture?

- This web form is used by the Human Resources Department

The image shows a screenshot of a web form titled "Jonah's Fishing Expedition New Employee Entry". The form is divided into two sections: "Required Data" and "Optional Data".

Required Data:

- Employee No. SSN
- Employee Name
- Address 1
- Address 2
- City St Zip
- Division Code Dept. Code
- Section Code

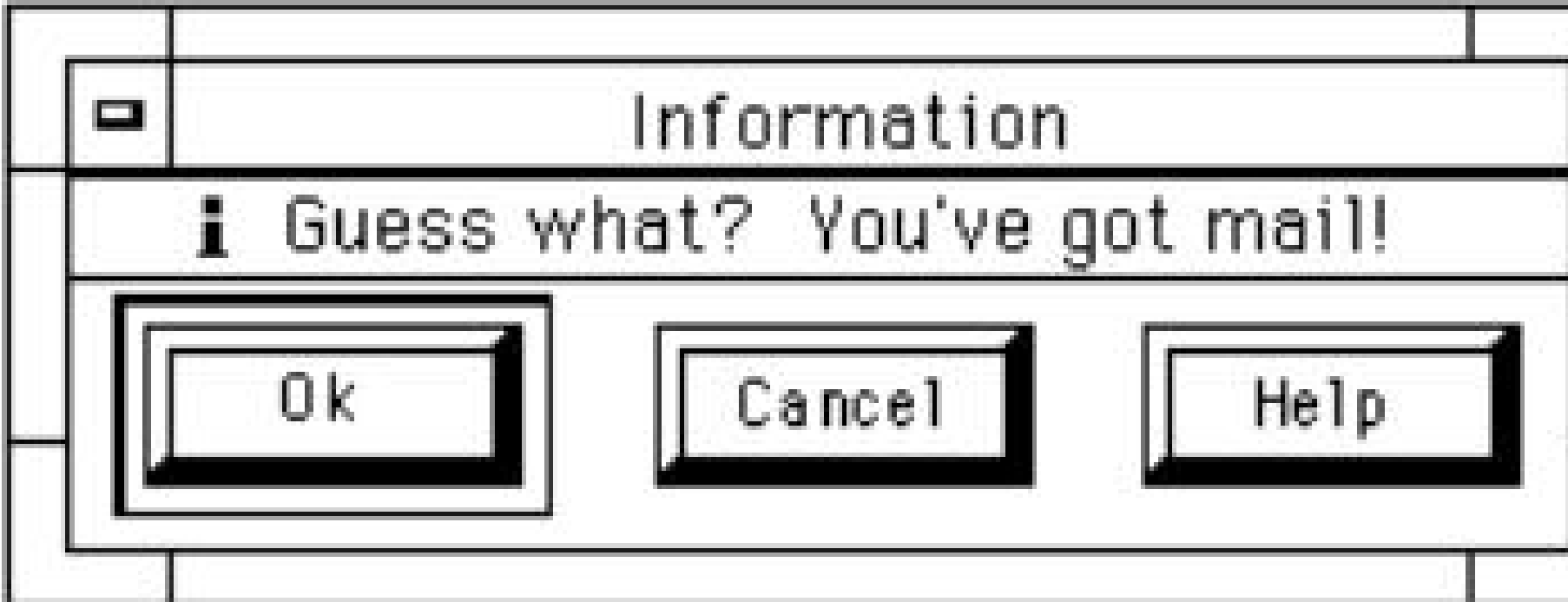
Optional Data:

- Sex (M/F) Birthdate (MM/DD/YY)
- Salary Grade
- Monthly Salary

At the bottom of the form, there are four buttons: "Next -F1", "Add Emp.-F2", "Cancel", and "Help".

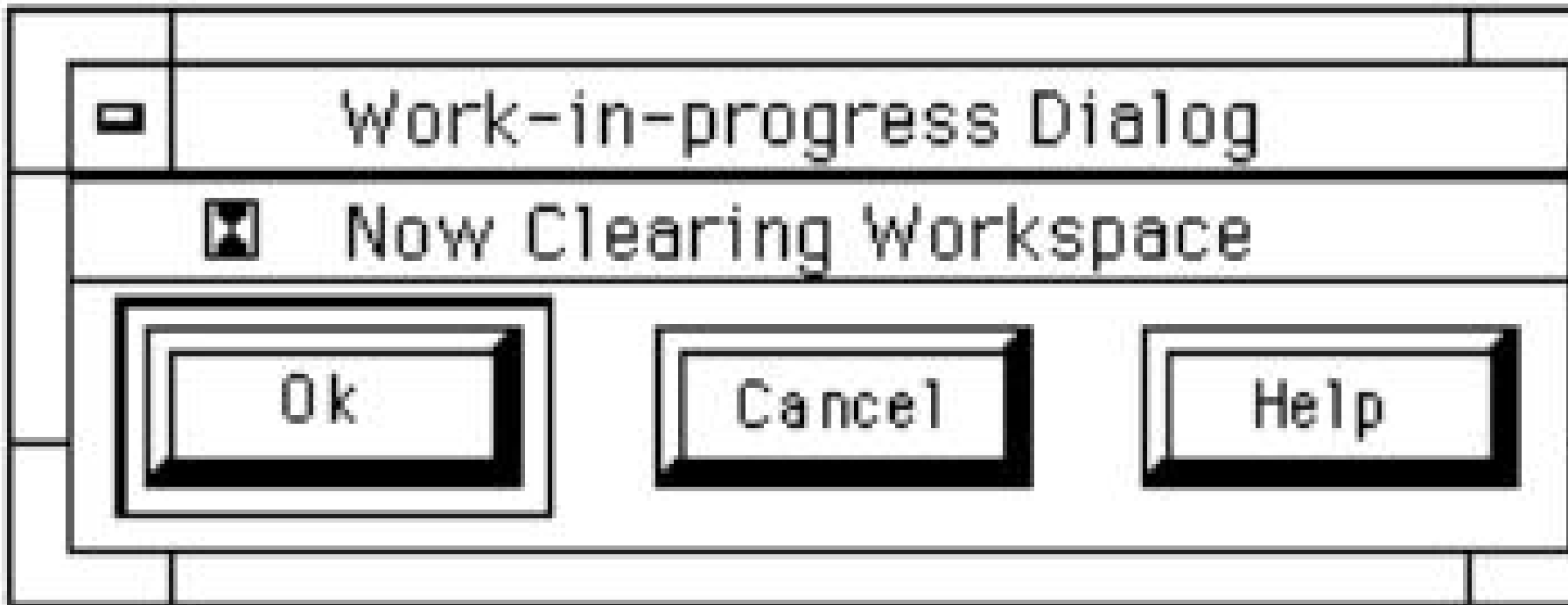
What's Wrong With This Picture?

- The following dialogue box appears:



What's Wrong With This Picture?

- The following dialogue box appears:



What's Wrong With This Picture?

- The following dialogue box appears:



What's Wrong With This Picture?

- The following dialogue box appears:

