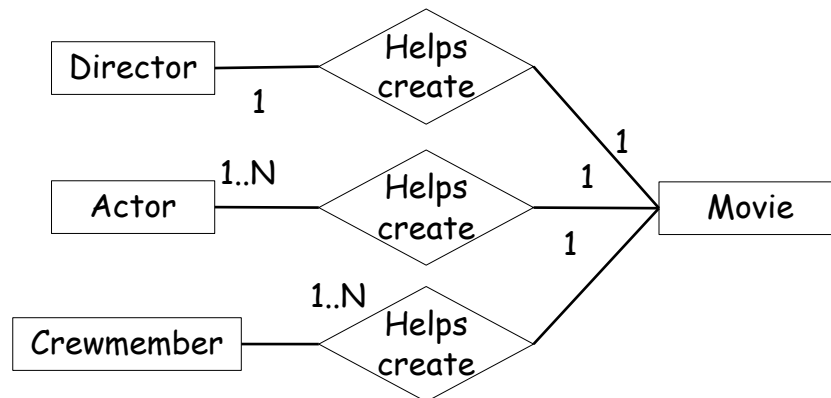
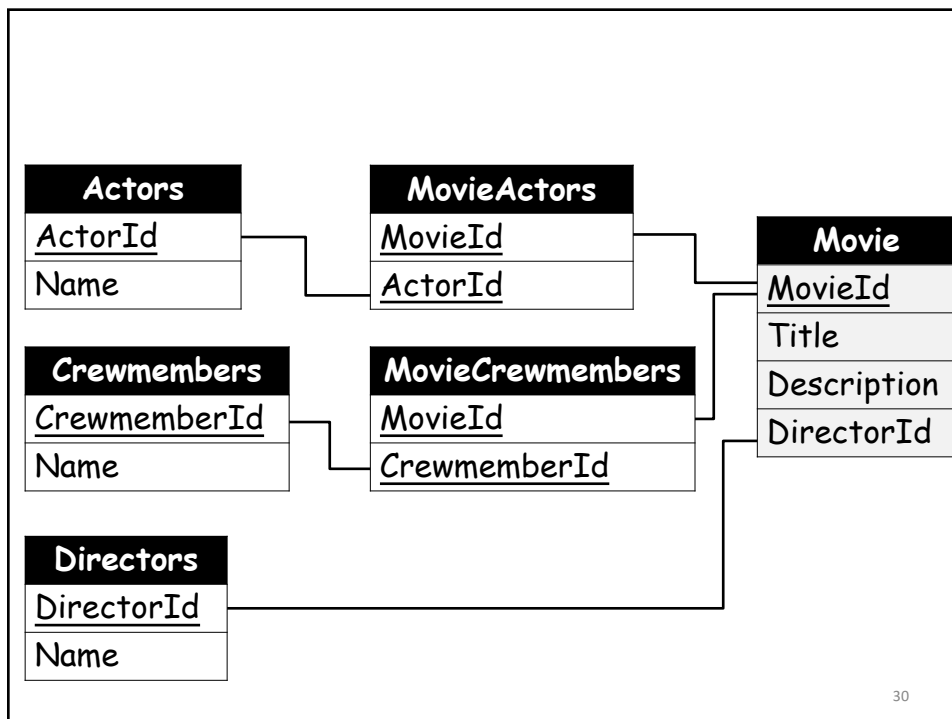


Consider the Relationship as a Combination of Simpler Relationships



29

29



30

30

Repeated Attribute Associations

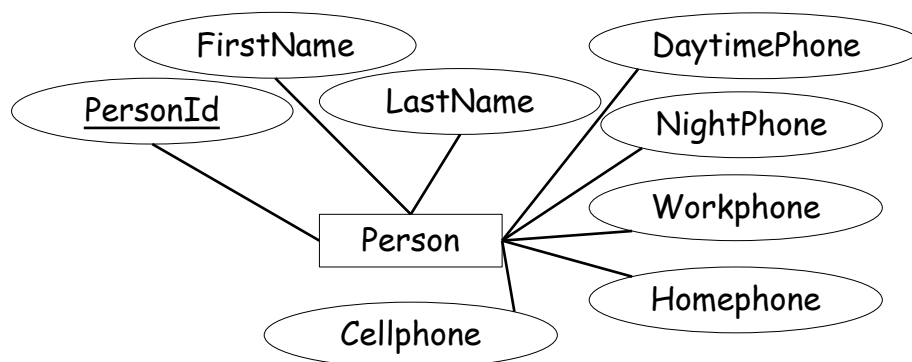
- Some entities have multiple attributes that represent either the same kind of data or very similar kinds of data
 - Some people may have multiple phone numbers for different purposes
 - Some people may have only one number to serve all purposes

Person
personId
firstName
lastName
workPhone
cellPhone
homePhone
dayPhone
nightPhone
...

31

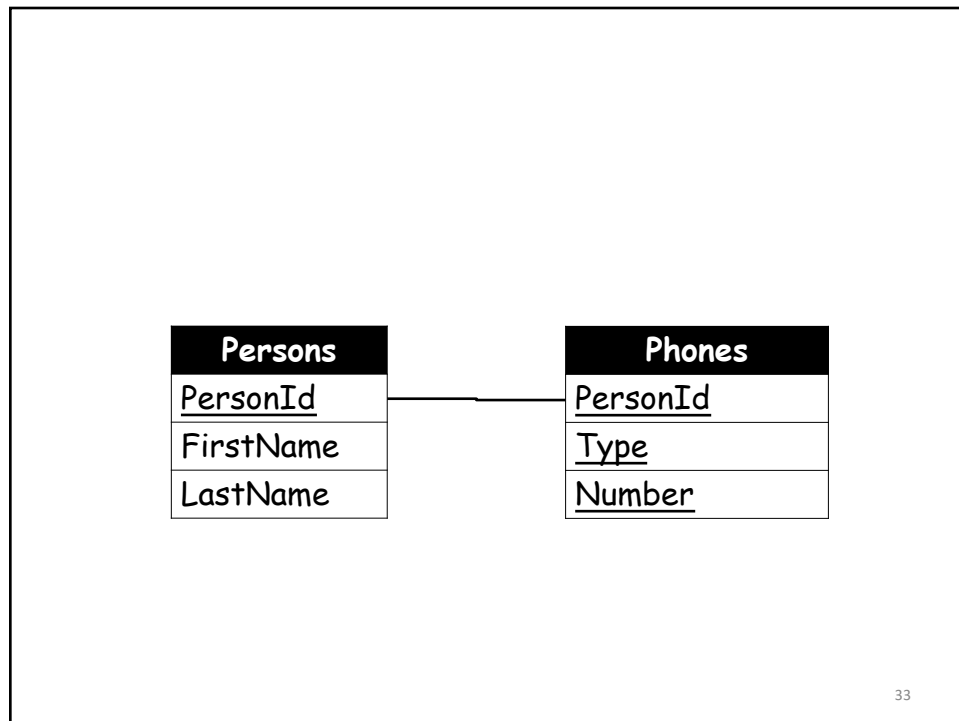
31

How to design the tables to avoid repetition or sparse data?



32

32



33

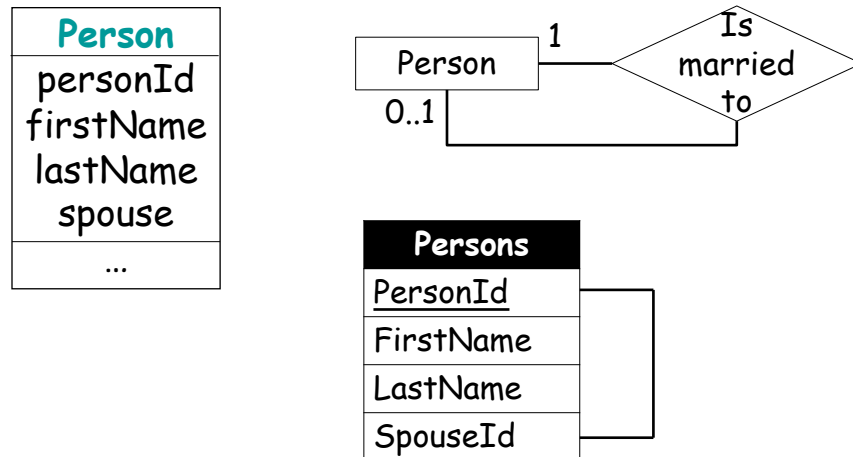
Reflexive Associations

- An object refers to an object of the same class
 - One-to-One reflexive association
 - One-to-Many reflexive association
 - Many-to-Many reflexive association

34

34

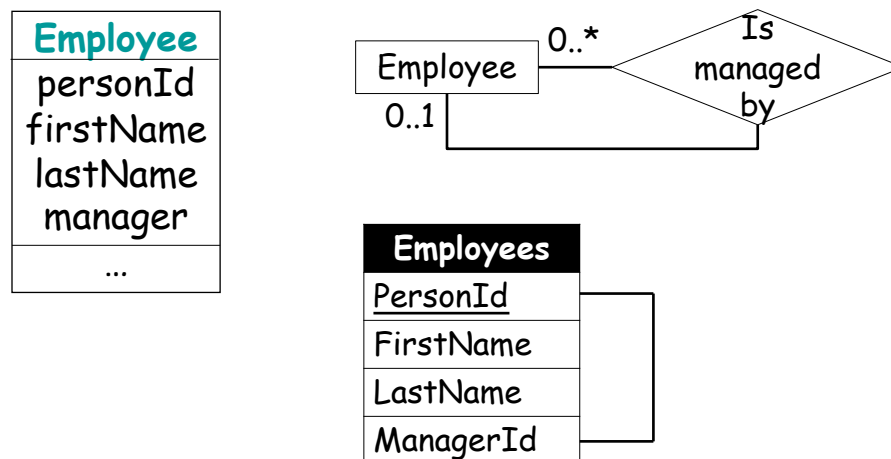
One-to-One Reflexive Association



35

35

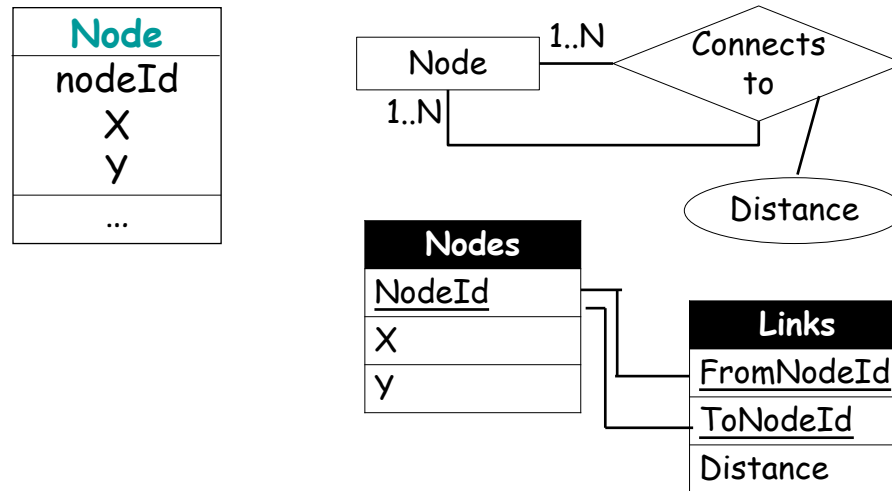
One-to-Many Reflexive Association



36

36

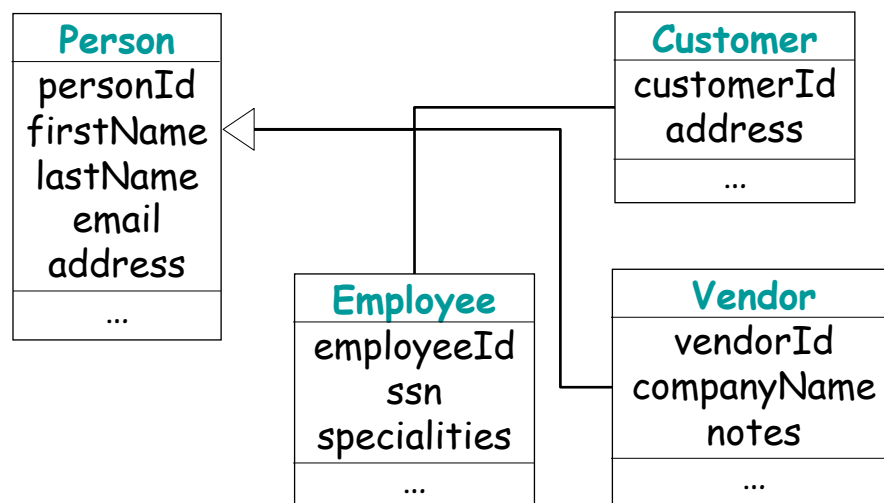
Many-to-Many Reflexive Association



37

37

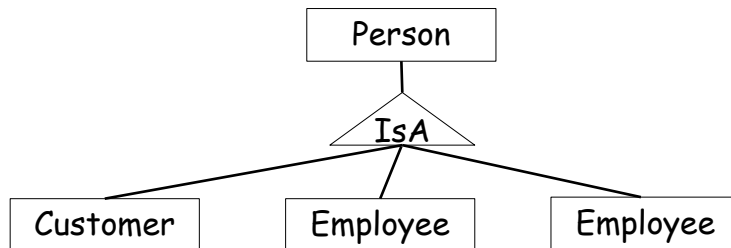
Inheritance



38

38

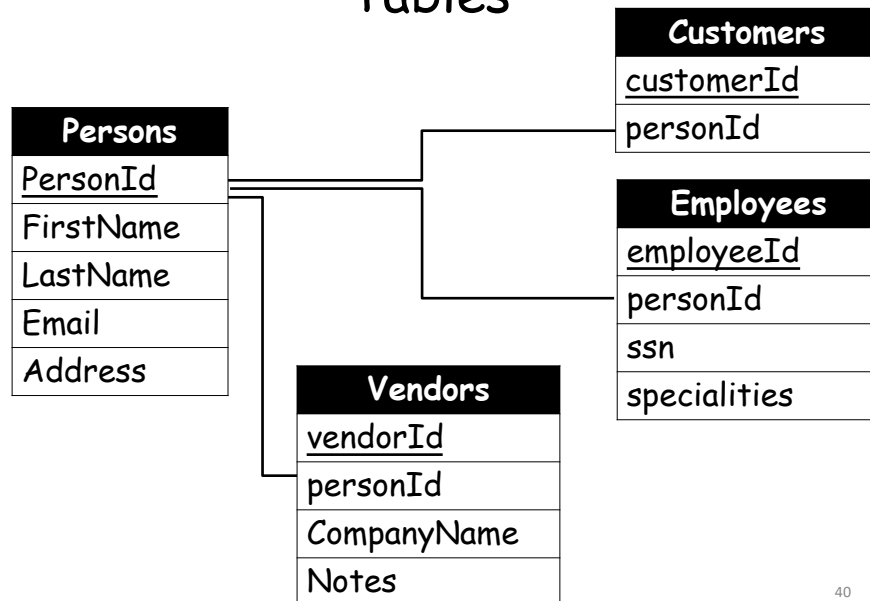
ER-Diagram



39

39

Tables



40

40